

Area Band Sponsoring Convention

By Cynthia Todd
Of the Post-Dispatch Staff

Thirteen years ago, Harry Swanger, a new arrival to St. Louis from Pittsburgh, stood in front of his home to watch the traditional Easter Parade wind through his Compton Heights neighborhood.

What struck him was the parade music. It wasn't too inspiring, Swanger remembers.

The bassoonist didn't mince his words back in 1975 as he criticized the performance. His critique prompted the parade organizers to assign him the task of providing the Easter parade music the following year.

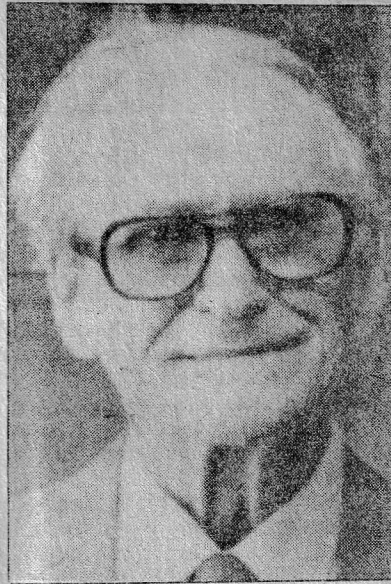
To do that, he got together in his living room 10 people — all musicians — from the neighborhood. He borrowed Kaid Friedel from his position with the St. Louis Symphony as a horn player to become conductor — and the Compton Heights Concert Band of St. Louis was born.

It is a community concert band, 65 members strong. Some have remained true to their first love, music, and have become professional musicians. Others are doctors, lawyers (Swanger is a lawyer), teachers and the like.

This weekend, those 65 will be joined by another 600 people — equally interested in concert bands — as the Compton Heights band and the Southern Illinois Concert Band play host to the 10th annual National Convention of the Association of Concert Bands. The convention begins Thursday at the Chase Hotel and continues through Saturday.

"We'll draw a range of people from band directors to community musicians. There will also be music educators from the region," Swanger said Sunday. He spoke as the band was hitting its first notes during an afternoon concert at Union Station.

Swanger, the band's president, said clinics during the three-day conference will address issues facing con-



Ted Paschedag
Played with Sousa

cert bands such as organization, fund raising and marketing.

But the highlight, said Swanger, will be a band concert extravaganza that will include four concerts open to the public. The first, at 8 p.m. Thursday, will be performed by the Southern Illinois Concert Band of West Frankfort, Ill. under the direction of Ted Paschedag. Paschedag, 83, is an original member of the famed John Philip Sousa Band.

On Friday at 8 p.m., the 90-piece Naperville Municipal Band will perform. And on Saturday at 3 p.m., the Association of Concert Bands Conference band will perform.

The Compton Heights band will play at 8 p.m. Saturday featuring tuba player Harvey Phillips. In the concert, the band will perform the world premiere of "A Summer Day in a St. Louis Park" composed by Robert Wykes of the Washington University music faculty. The piece was commissioned by the Missouri Arts Commission and the Compton Heights band.

All performances will be in the Khorassan Room of the Chase. Admission is \$5 for all four concerts or \$10 for preferred seating.

The finale of the conference will be a dance to the Big Band sounds of Second Nature. Those wishing more information about the conference may call 776-2227.

Lawn Gurus Spread G

By Tom Uhlenbrock
Of the Post-Dispatch Staff

Bob Thomson, television's of greenery, was bombarded questions this weekend about grubworms and other beast homeowners began their a quest for the perfect lawn.

Thomson, host of public sion's "Victory Garden," guest appearances Saturday Orchard Gardens Nursery in Chester and Raintree Nursery Charles.

For those unable to show up personal consultation, the nial Thomson had these hints.

"The first thing is to get out and rake the lawn," he said. "I had crabgrass last year, use emergent crabgrass product can be combined with a fer such as Balan. Make a second application of crabgrass control to 80 days, and that should care of it for all season."

If reseeding is needed in Thomson said, the products are Sidgeron or Tupersan, are called "pre-emergent" b they are supposed to be applied before seedlings appear.

Limestone should be added soil that is acidic, and agric sulfur should be worked into line soil. He said some gardeners or a university extension vice would test soil samples.

A second application of fer should follow in about six weeks.

"Lawns should be mowed length of 2½ to 3 inches," he

Come Help C

